



UNIVERSITY OF CALIFORNIA
COOPERATIVE EXTENSION
4-H
ROADRUNNER

207 W. SOUTH STREET
BISHOP, CA 93514

August 2012—Fair Special

OFFICE (760) 873-7854
FAX (760) 873-7314

2011-2012 Calendar of Events

August

- 9 Last day to turn in Gold Seal Record Books for County Judging
15-18 Fair Entry forms due to the Fairgrounds
16 County Record Book Judging, 5:30pm at 4-H Office
25 8 am to 5 pm - 4-H Entries due **except** Food & Ag to Douglas Robinson Building
28 5 pm to 8 pm - 4-H Baked Foods due to Douglas Robinson Building
29 6 pm to 8 pm - 4-H Agriculture due to Douglas Robinson Building
30 6:30 to 8:30 a.m. - 4-H Agriculture due to Douglas Robinson Building
30 thru 9/2 Tri-County Fair

September

TBA 4-H Sign-Up Fair in Bishop, Lone Pine, Coleville and Benton

2012 Eastern Sierra Tri-County Fair

**“Forever Red, White and Blue at
The Tri-County Fair!”**

It is that time of year again — fair! We'd like to invite everyone to join us with your creativity, craftiness, and brilliance. See pages 2 - 9 for the many possible ways you can enter homemade and homegrown items in the fair.



Let's make this the best year ever for our 4-H department! Show your 4-H spirit by entering in the fair! Each 4-H member entering in the 4-H Department will receive a prize ticket. Prizes include: key chains, stuffed animals, bandanas, bags, and much more! Pick up your prize when you turn in your entries.

Note: You did not have to make it in 4-H to enter it in the 4-H Department, but you must be a 2011-12 4-H member.

Rules Regarding Primary Members

4-H Primary (K-3rd Grade) Exhibitors **ARE NOT** subject to paying entry fees for their entries. Therefore, 4-H Primary (K-3rd Grade) Exhibitors entries **ARE NOT** judged nor are they eligible to receive 1st, 2nd or 3rd place ribbons or Best of Show awards for their entries.

Instead, they will be eligible for “Primary Awards” which will be selected by random drawing from entries in the following Primary (K-3rd Grade) divisions: Clothing (Div 700 & 703 combined); Foods & Place Settings (Div 710, 715 & 720 combined); Photography (Div 725), Fine Arts and more (Div 730, 733, & 735 combined); School Projects & more (Div. 740, 743, 744 & 747); Handicrafts and more (Div 750, 754 & 755).

See premium book for ALL rules. Books available at 4-H Office or Fairgrounds main office. You can also access the entire book at:

<http://www.tricountyfair.com/fair.php> (Scroll down to bottom of page & click on: download new fair book for 2012)

4-H DEPARTMENT

-SPECIAL AWARDS-

Overall Best of Show (4th-12th Grades Only)

Combined Divisions: 701, 702 & 703

Primary Drawing (K-3rd Grade)

Combined Divisions: 700 & 703

(Up to 2 awards may be given in the above stated combined Divisions. **NOT** 2 per each Division).

4-H CLOTHING AND TEXTILES

DIVISION 700 PRIMARY CLOTHING (K-3rd Grade)

DIVISION 701 JUNIOR CLOTHING (4-8th Grade)

DIVISION 702 SENIOR CLOTHING (9-12th Grade)

CLASS

1. Apron
2. Tote Bag or Purse
3. Dress
4. Pants/ Shorts
5. Top/ Blouse
6. Jacket/Vest
7. Skirt
8. Pajamas
9. Coordinated Outfit, 2 or More Items
10. Wool Item, Specify
11. Wool, Coordinated Outfit, 2 or More Items
12. Any Other Clothing, Specify
13. Toy, Stuffed
14. Pillow
15. Pillow Case
16. Embroidery
17. Needlepoint
18. Knitted Item
19. Crochet Item
20. Cross Stitch
21. Any Other Textile, Specify

DIVISION 703 QUILTING (All Age Groups)

CLASS

1. Memory Quilt
2. Traditional Quilt
3. Innovative
4. Any Other, Specify

SPECIAL BAKING CONTEST

DIVISION 713 Great American Cupcake Bake Contest

Must be made from scratch (no mixes) and decorated using the Fair Theme: "Forever Red, White and Blue at the Tri-County Fair. **Recipe must accompany entry**

Winner will receive \$25.00!

Class

1. Cupcake Bake Contest (4 cupcakes)

-SPECIAL AWARDS-

Overall Best of Show (4th-12th Grades Only)

Combined Divisions: 711, 712, 715, 721, & 722

Primary Drawing (K-3rd Grade)

Combined Divisions: 710, 715, & 720

(Up to 2 awards may be given in the above stated combined Divisions. **NOT** 2 per each Division).

DIVISION 710 PRIMARY (K-3rd)

DIVISION 711 4-H FOODS (4th-8th Grade)

DIVISION 712 4-H FOODS (9th-12th Grade)

CLASS

1. Bread, Yeast, 1 Loaf
2. Bread, Quick, 1 Loaf
3. Cookies, 1/2 Dozen
4. Brownies, 1/2 Dozen
5. Cake, 1 Whole
6. Cupcakes, 4
7. Candy, Specify, 8 Pieces
8. Fruit Pie, Specify, 1 Whole
9. Decorated Item, Specify (Styrofoam or cardboard base)
10. Other Baked Foods, Specify

4-H FOOD PRESERVATION

Best of Show 4-H Food Preservation

JARS MUST BE LABELED. Labels must list type of product and process used: i.e. water bath, pressure, open kettle, and time of processing, as well as date processed. Paraffin MAY NOT BE USED FOR JAMS AND JELLIES.

DIVISION 715 PRESERVED FOODS

CLASS

1. Fruit, Any, Specify
2. Vegetable, Any, Specify
3. Jams or Jellies, Any, Specify
4. Jams or Jellies (low/no sugar), Any, Specify
5. Pickles, Relish or Sauce, Specify
6. Dehydrated Item, Specify
7. Any Other Food Preservation, Specify
8. Jerky, Specify

4-H PLACE SETTING

Place setting for one person. Setting to include proper plates, utensils, etc., for theme used. Place Setting should include a centerpiece. If fresh flowers are used, they must be freshened during the fair. **MENU MUST BE INCLUDED** (included in judging criteria).

DIVISION 720 PLACE SETTING (K-3rd Grade)

DIVISION 721 PLACE SETTING (4th-8th Grade)

DIVISION 722 PLACE SETTING (9th-12th Grade)

CLASS

1. "Forever Red, White & Blue at The Tri-County Fair"
2. Exhibitors Choice

4-H PHOTOGRAPHY VIEWER'S CHOICE CONTEST

Sponsored by:
Inyo & Mono Counties 4-H Clubs

Winner will receive \$50.00!!

4-H Photography Exhibitors may enter one photo for this special contest. The photo **WILL NOT** be judged. Photo may either be digital or traditional (35mm) film. Photo can be no larger than 8-1/2" x 11" and mounted on a standard sheet of colored paper. Exhibitors must clearly print on the back of the paper in the top left hand corner: their name, phone number, 4-H Club and age. Photos will be displayed in plastic sleeves (to be provided by Fair). *NOTE: PHOTO MUST HAVE BEEN TAKEN WITHIN ONE YEAR FOLLOWING THE 2010 TRI-COUNTY FAIR. There is no pre-entry or entry fee for this special contest. Please bring photo being entered to the 4-H building at the Fair on Sat., 8/25/12 between 8am-5pm.

Fairgoers will cast votes for their favorite photo Thurs., 8/30/12 thru Sat., 9/1/12. Voting results will be posted Sun., 9/2/12 in the 4-H Photography display area.



4-H Photography Exhibitors Artistic Photo Special Contest Sponsored by Eastside Books

\$25.00 Cash Prize

4-H Photography Exhibitors must create a beautiful and interesting photograph that best uses the elements of composition, such as subject placement, leading lines, pattern and texture, color and contrast, lighting, and depth of field.

Only one photo may be entered for this special contest. Photo can be no larger than 8-1/2" x 11" and mounted on a standard sheet of colored paper. Exhibitors must clearly print on the back of the paper in the top left hand corner: their name, phone number, 4-H Club and age. Photos will be displayed in plastic sleeves (to be provided by Fair). *NOTE: PHOTO MUST HAVE BEEN CREATED DURING THE 2011/2012 4-H PROJECT YEAR. There is no pre-entry or entry fee for this special contest. Please bring photo being entered to the 4-H building at the Fair on Sat., 8/25/12 between 8am-5pm.

Winner to be determined by
4-H Photography Judge prior to Fair opening.

Winner will be announced by special placard.

Winner can claim their cash prize from the
4-H Office after Tuesday, 9/4/12

4-H PHOTOGRAPHY

-SPECIAL AWARDS-

Best of Show Each Division

(4th-8th (Div 726), 9th-12th Grade Only (Div 727))

Primary Drawing Award (Div 725)

(K-3rd Grade)

Photographs entered in these divisions may be either digital or traditional (35mm) film. Photos must be 8"x10" and mounted on a standard sheet of colored paper. Photos will be displayed in plastic sleeves (to be provided by Fair).

DIVISION 725 PRIMARY PHOTOGRAPHY (K-3rd Grade)

DIVISION 726 JUNIOR PHOTOGRAPHY (4th-8th Grade)

DIVISION 727 SENIOR PHOTOGRAPHY (9th-12th)

CLASS

1. Animal, Domestic, Color
2. Animal, Wild, Color
3. Animal, Domestic, Black & White
4. Animal, Wild, Black & White
5. Scenery, Color, Inyo, Mono & Alpine Counties
6. Scenery, Color, Any Other
7. People, Candid, Color
8. People, Posed, Color
9. People, Candid, Black & White
10. People, Posed, Black & White
11. Flowers
12. Nature
13. Insects & Bugs
14. Fish
15. 4-H Activity
16. Mule Days
17. Action Sports
18. Journalistic Series, 3 or More Photos*
19. Any Other Black & White
20. Any Other Color
21. Digital Art (See Definition on Page 46)

***Journalistic Series:** Tells a story in 3-6 photos. Photos can be either 5" X 7" or 4" X 6" in size. Photos must be mounted on a colored poster board no larger than 11"x17". Exhibitors must clearly put their name, 4-H Club and age on the back of the poster board in the upper left hand corner

How are 4-H Entries Judged?

The Danish System of judging is based on established standards of quality for each type of product. In this system, each exhibit is judged according to how well it meets that standard, rather than how it compares with other exhibits.

In all 4-H Departments using the Danish System, the following outlines shall be used by the Judge:

- 1st Group - Superior 92-100% - Blue Ribbon
- 2nd Group - Good 84-91% - Red Ribbon
- 3rd Group - Average 70-83% - White Ribbon
- 4th Group - Poor 69% or less - No Ribbon

Best of Show Winners are chosen from the 1st Place entries in each Division, unless otherwise noted.

-SPECIAL AWARDS-

Overall Best of Show (4th-12th Grades Only)

Combined Divisions: 731, 732, 733, 735, 737 & 738

Primary Drawing (K-3rd Grade)

Combined Divisions: 730, 733, 735 & 736

(Up to 2 awards may be given in the above stated combined Divisions. **NOT** 2 per each Division).

4-H FINE ARTS

DIVISION 730 PRIMARY FINE ARTS (K-3rd)

DIVISION 731 JUNIOR FINE ARTS (4th-8th Grade)

DIVISION 732 SENIOR FINE ARTS (9th-12th Grade)

CLASS

1. Pen
2. Pencil, Black & White
3. Colored Pencil
4. Pastel Crayon
5. Crayon
6. Felt Tip
7. Oil
8. Watercolor
9. Acrylic
10. Charcoal
11. Mixed Medium
12. Collage
13. Tessellation
14. Any Other Medium

4-H Fine Arts & Handicraft Exhibitors

Special Drawing
\$25.00 Cash Prize

Each 4-H member entering in the 4-H Fine Arts Division (731-732) and in the Handicraft Division (751 & 752) will have their name entered into a random drawing with a \$25.00 cash prize going to the lucky winner!

Drawing will be held prior to Fair opening.

Winner will be announced by special placard.

Winner can claim cash prize from 4-H Office after Tuesday, 9/4/12

4-H GIFT WRAPPING

DIVISION 733 GIFT WRAPPING

Wrap a gift, any size or shape, not to exceed 18" x 18" x 18".

CLASS

1. Birthday
2. Celebrate 4-H
3. Fair Theme
4. Any Other, Specify

4-H COLLECTIONS

Exhibitors must provide their own supplies for decorating their collection box. Judging will consider the way the box is decorated to go along with the collection. Exhibitors are to include a 3" x 5" card with information about your collection.

DIVISION 735 COLLECTIONS

CLASS

1. Collection: 1-5 Items, Specify Items
2. Collection: 6-10 Items, Specify Items
3. Collection: 11 or more items, Specify Items
4. Doll Collection

4-H SCIENCE JOURNALS

DIVISION 736 PRIMARY SCIENCE JOURNAL (K-3rd)

CLASS

1. Solids, Liquids and Gases, Oh My!
2. Secret Formulas

4-H CREATIVE WRITING

DIVISION 737 CREATIVE WRITING (4th-8th Grade)

DIVISION 738 CREATIVE WRITING (9th-12th Grade)

CLASS

1. Poetry
2. Short Story (Under 2,000 Words)
3. Any Other, Specify

-SPECIAL AWARDS-

Overall Best of Show (4th-12th Grades Only)

Combined Divisions: 741, 742, 743, 745, 746 & 747

Primary Drawing (K-3rd Grade)

Combined Divisions: 740, 743, 744, & 747

(Up to 2 awards may be given in the above stated combined Divisions. **NOT** 2 per each Division).

4-H SCHOOL PROJECTS

Items in this division may have been made at school by the 4-H member. **MEMBERS WHO ENTER IN THIS DIVISION MAY NOT ENTER IN THE JUNIOR SCHOOL PROJECT DIVISIONS.**

DIVISION 740 PRIMARY SCHOOL PROJECTS (K-3rd)

DIVISION 741 SCHOOL PROJECTS (4th-8th Grade)

DIVISION 742 SCHOOL PROJECTS (9th-12th Grade)

CLASS

1. Creative Writing, Poetry
2. Creative Writing, Short Story
3. Creative Writing, Any Other
4. History Project
5. Inventions
6. Maps
7. Mission
8. Models
9. Paper Mache

4-H LEATHER CRAFT PROJECTS

DIVISION 743 LEATHER CRAFT PROJECTS

CLASS

1. Wallet
2. Belt
3. Leather Craft, Large Item, Specify
4. Leather Craft, Small Item, Specify

4-H MEMORY ALBUM PROJECTS

DIVISION 744 MEMORY ALBUM PROJECTS (K-3rd)

DIVISION 745 MEMORY ALBUM PROJECTS (4th-8th)

DIVISION 746 MEMORY ALBUM PROJECTS (9th-12th)

CLASS

1. Family
2. School
3. 4-H
4. Favorite Hobby
5. Any Other Memory Album, Specify

4-H WOODWORKING PROJECTS

DIVISION 747 4-H WOODWORKING PROJECTS

CLASS

1. Small Wood Item, Specify
2. Large Wood Item, Specify
3. Wood Item From A Kit, Specify

-SPECIAL AWARDS-

Overall Best of Show (4th-12th Grades Only)

Combined Divisions: 751, 752, 753, 754, 755 & 756

Primary Drawing (K-3rd Grade)

Combined Divisions: 750, 754, 755

(Up to 2 awards may be given in the above stated combined Divisions. **NOT** 2 per each Division).

4-H AG MECHANICS

DIVISION 753 4-H AG MECHANICS

CLASS

1. Small Engine
2. Welding
3. Any Other Ag Mechanics, Specify

4-H FLORICULTURE

-SPECIAL AWARD-

Best of Show 4-H Floriculture

Items in this division are to be brought in on Wed., 8/29/12, 6:00pm - 8:00pm or Thurs., 8/30/12, 6:30am - 8:30am.

DIVISION 754 4-H FLORICULTURE

CLASS

1. Fresh Arrangement
2. Cut Flower, Specify
3. Potted Plant, Specify
4. Flowering Plant, Specify
5. Mini Garden
6. Any Other Fresh Floriculture Item, Specify

4-H HANDICRAFTS

DIVISION 750 HANDICRAFTS (K-3rd Grade)

DIVISION 751 HANDICRAFTS (4th-8th Grade)

DIVISION 752 HANDICRAFTS (9th-12th Grade)

CLASS

1. Birdhouse, Decorated
2. Block Construction (Lego, Knex, etc.), Single Item
3. Block Construction (Lego, Knex, etc.), 2 Or More Items
4. Carving
5. Christmas Ornament, Any
6. Clay Item, Any
7. Decoration, Summer
8. Decoration, Fall
9. Decoration, Winter
10. Decoration, Spring
11. Doll, Any
12. Fabric Painting
13. Flower Pot, Decorated
14. Garden Items
15. Jewelry
16. Candle, Dipped
17. Candle, Poured
18. Model, Specify if from a Kit
19. Native American Art, Beading
20. Native American Art, Any Other
21. Paper Art, Any
22. Pottery, Any
23. Wreath
24. Holiday Decoration
25. Holiday Craft
26. Any Other Handicraft, Specify

(See page 4 to see how you can win \$25!)

MISCELLANEOUS 4-H PROJECTS

DIVISION 755 4-H PROJECTS

CLASS

1. Shooting Sports
2. Recreation Project
3. Wildlife Project
4. Livestock Project
5. Home Economics Project
6. Model Airplanes
7. Control-Line Model Airplanes
8. Balsa Wood Airplanes
9. Rocketry Project
10. Computer Project, Specify

4-H ARCHERY PROJECT

DIVISION 756 4-H ARCHERY

CLASS

1. Arm Guards
2. Finger Tabs
3. Quivers
4. Arrows
5. Any Other Archery Project, Specify

4-H AGRICULTURE

Frank Simpson Memorial Award

Awarded By Eastern Sierra Certified Farmers' Market
to the Best of Show In 4-H Agriculture

Note: Agricultural products entered may have been grown as part of a family or community garden.

Items in these divisions are to be brought in on Wed., 8/29/12, 6:00 pm—8:00pm or Thurs., 8/30/12, 6:30am - 8:30am.

DIVISION 790 HERBS

CLASS

1. Rosemary, 1 Bunch
2. Thyme, 1 Bunch
3. Basil, 1 Bunch
4. Chives, 1 Bunch
5. Dill, 1 Bunch
6. Oregano, 1 Bunch
7. Mint, 1 Bunch
8. Sage, 1 Bunch
9. Parsley, 1 Bunch
10. Lavender, 1 Bunch
11. Any Other Herb, Specify

DIVISION 791 FRUIT AND POD VEGETABLES

CLASS

1. Beans, Any Variety, 6 pods
2. Pepper, Bell, 4
3. Pepper, Chileno, 4
4. Pepper, Any Other, 4
5. Tomatoes, Cherry, 6
6. Tomatoes, Any Other Variety, 5
7. Any Other Fruit or Pod Vegetable, Specify

DIVISION 792 LEAFY & STEM VEGETABLES

CLASS

1. Corn, Any Variety, 5 ears
2. Cabbage, 1 head
3. Lettuce, Any variety, 1 head or bunch
4. Rhubarb, 3 stalks
5. Any Other Leafy and Stem Vegetable, Specify

DIVISION 793 ROOT, BULB & TUBER VEGETABLES

CLASS

1. Carrots, Any Variety, 1 Bunch, 3 - 5
2. Onions, Green, 1 Bunch - 5
3. Onions, Any Other, 2
4. Garlic, Any Variety, 3 bulbs
5. Potatoes, Any Variety, 3
6. Any Other Root, Bulb or Tuber Vegetable, Specify



DIVISION 794 VINE CROPS

CLASS

1. Cucumbers, Any Variety, 3
2. Squash, Zucchini, 3
3. Squash, Any Other Summer Variety, 3
4. Squash, Any Winter Variety, 1
5. Pumpkin, 1
6. Melon, Cantaloupe, 1
7. Melon, Watermelon, 1
8. Melon, Any, Specify, 1
9. Any Other Vine Crop, Specify

DIVISION 795 FRUITS AND BERRIES

CLASS

1. Apples, Any Variety, Specify, 5
2. Pears Any Variety, Specify, 5
3. Peaches, Any Variety, Specify, 5
4. Grapes, Any Variety, Specify, 1 bunch
5. Berries, Any Variety, Specify, 1 Standard Basket
6. Any Other Fruit Not Listed, Specify
7. Any Other Berry Not Listed, Specify

DIVISION 796 VEGI-FRIENDS

Make your own Vegetable People using different parts of vegetables or flowers. Accessories and foliage are permitted.

CLASS

1. Primary (K-3rd Grade)
2. Junior (4th-8th Grade)
3. Senior (9th-12th Grade)

4-H Vegi-Friend; Exhibitor

**Special Drawing
\$25.00 Cash Prize**

**Each 4-H member entering in the 4-H Vegi-Friends
Division will have their name entered
into a random drawing with
a \$25.00 cash prize going to the lucky winner!**

Drawing will be held prior to Fair opening.

Winner will be announced by special placard.

**Winner can claim cash prize from 4-H Office after
Tues., 9/4, 2012**

DIVISION 797 OTHER AG PRODUCTS

CLASS

1. Gourds, 3
2. Hay, Any, Specify, 1 Bale
3. Sunflower, 1 Large Head
4. Any Other Just for Fun Garden Item, Specify
5. Garden Variety Display

**Entry form on pages 7 and 8
Additional Class Entries Continued on page 9**

4-H ENTRY FORM
Eastern Sierra Tri-County Fair
 P.O. Box 608, Bishop, CA 93515
 Email: info@tricityfair.com
 www.tricityfair.com

4-H Club: _____
 Leader's Statement: I verify that this exhibitor is a member
 of good standing of the above 4-H Club.
Cathy Lee's 4H Office
 Signature, Project, Club Leader or Advisor Date

LEAVE BLANK	DEPARTMENT CODE	DIVISION #	CLASS #	CLASS NAME OR TITLE OF ITEM ie: Foods, Cookies, Fine Art, "My Dog"	ENTRY FEE

**PLEASE PRINT CLEARLY AND
 FILL OUT COMPLETELY**
 Be sure to complete/sign the required
 Liability Waiver on the reverse of this form

I WISH TO DONATE AWARDED
 PREMIUMS BACK TO THE
 TRI-COUNTY FAIR

4-H EXHIBITOR	
@ \$0.75	
@ \$0.50	
@ \$0.25	
Total Entry Fees	

Last Name: _____ First Name: _____
 Physical Address: _____
 City/State/Zip: _____ County: _____
 Mailing Address: _____
 City/State/Zip: _____ Telephone: _____
 AGE: _____ GRADE: _____

OFFICE USE ONLY:
 EXHIBITOR NUMBER _____

Exhibitors: Please be sure to complete and sign the liability waiver on the

ENTRY FORMS ACCEPTED: WED., 8/15/12 THRU SAT., 8/18/12

**EASTERN SIERRA TRI COUNTY FAIR
RELEASE AND WAIVER OF LIABILITY AGREEMENT**

I, _____ (exhibitor), acknowledge that I have voluntarily applied to participate in the Eastern Sierra Tri-County Fair.

I AM AWARE THAT THE ABOVE DESCRIBED ACTIVITIES MAY BE HAZARDOUS ACTIVITIES, AND I AM VOLUNTARILY PARTICIPATING IN THESE ACTIVITIES WITH KNOWLEDGE OF THE DANGER INVOLVED, AND AGREE TO ASSUME ANY AND ALL RISKS OF BODILY INJURY, DEATH OR PROPERTY DAMAGE.

As consideration for being permitted by the fair, the Counties or Inyo, Mono and Alpine and the State of California to participate in these activities and use their facilities, I hereby agree that I, my assignees, heirs, distributees, guardians, next of kin, spouse and legal representatives will not make any claim against, sue or attach the property of the Fair, Inyo, Mono or Alpine Counties, or the State of California, or any of their affiliated organizations for injury or damage resulting from the negligence or other acts, however caused, by a director, employee, agent or contractor of the Fair, the Counties of Inyo, Mono and Alpine, or the State of California or any of their affiliated organizations as a result of my participation in Fair activities. I forever release the Fair, Inyo, Mono & Alpine Counties and the State of California and any of their affiliated organizations from any and all action, claims or demands that I, my assignees, heirs, distributees, guardians, next of kin, spouse and legal representatives now have or may hereafter have for injury or damage resulting from my participation in the activities described above.

I HAVE CAREFULLY READ THIS AGREEMENT AND FULLY UNDERSTAND ITS CONTENTS. I AM AWARE THAT THIS IS A RELEASE OF LIABILITY AND A CONTRACT BETWEEN MYSELF AND THE FAIR, INYO, MONO & ALPINE COUNTIES AND THE STATE OF CALIFORNIA AND/OR THEIR AFFILIATED ORGANIZATIONS AND SIGN IT OF MY OWN FREE WILL.

Executed at _____, California on _____, 2012.

Exhibitor's Signature

**Parent or Guardian Signature
(If Exhibitor is Under 18 Years of Age)**

If you are under 18 years of age, you and your parent or guardian must sign and initial this form where indicated.

4-H Agriculture (continued)

DIVISION 798 GARDEN ODDITIES

CLASS

1. Largest Weed
2. Largest Vegetable or Fruit
3. Oddest Shaped Fruit or Vegetable
4. Item Grown in a Jar, Specify
5. Any Other Garden Oddity, Specify

DIVISION 799 GARDEN BASKETS

Use a basket, bowl, bucket or any container, decorate it and fill with items from your garden. Display **MUST** contain at least six different varieties of fruits, vegetables or other agricultural items. Non-garden items may be used to enhance the display.

CLASS

1. Individual
2. Club

DIVISION 800 GARDEN PLANTERS

CLASS

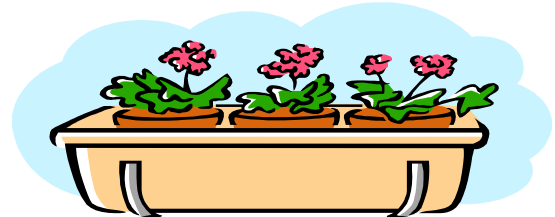
1. Herbs
2. Vegetables
3. Flowers
4. Combination, Specify

DIVISION 801 EGGS

One dozen eggs must be displayed in a standard one dozen egg carton.

CLASS

1. White Eggs, Standard
2. Brown Eggs, Standard
3. Any Other Standard Eggs, Specify
4. White Eggs, Bantam
5. Brown Eggs, Bantam
6. Any Other Bantam Eggs, Specify



4-H Garden Planters Exhibitors

Special Drawing
\$25.00 Cash Prize

Each 4-H member entering in the 4-H Garden Planters Division will have their name entered into a random drawing with a \$25.00 cash prize going to the lucky winner!

In order for the prize to be awarded there must be 6 entries or more in this division.

Drawing will be held prior to Fair opening.

Winner will be announced by special placard.

Winner can claim cash prize from 4-H Office after Tuesday, 9/4/12

4-H PRIZE DRAWING

Each 4-H member entering into the 4-H Department will receive a prize drawing ticket.

Prizes range in value from \$1 to over \$25. One prize per 4-H member.

Prizes include: 4-H key chains, stuffed animals, chairs, bandanas, bags, and much more!

Pick up your prize when you turn in your entries.

HOW DO YOU ENTER?

You do not need to be signed up for a particular project to enter something in the 4-H Department. The only requirement is that you were a registered 4-H member this past year.

To make it easy for you we have included a listing of the 4-H divisions and classes you can enter along with an entry form on pages 7 & 8. Be sure you fill out both sides of the form. We do have a very limited number of premium books in our office. You can also go to: <http://www.tricountyfair.com/fair.php> (Scroll down to bottom of page & click on: download new fair book for 2012. The 4-H Department starts on page 60.

Cost of entries are:

1-5 entries = .75 each; 6-10 entries = .50 each;

11 & up entries = .25 each.

The more you enter, the cheaper it is. If you entered 15 items you would pay \$7.50 using this formula. (5 @ .75 + 5 @ .50 + 5 @ .25).

Reminder: Primary members were in grades K-3 for the 2011-12 year, and were only 8 years of age or younger by December 31, 2011. They do not have to pay to enter items in the Primary Division of the 4-H Department. They are not eligible to win awards competitively. However, they are eligible for a drawing for different divisions they may enter in. See previous pages for details.

Entry forms are due Aug. 15-18 to the Livestock Office at Fairgrounds

Bring all items **except all foods, fruits, vegetables and flowers** on Saturday, August 25th to the fairgrounds between 8:00 a.m. and 5:00 p.m. Please come as early in the day as you can.

All foods items will be accepted on Tuesday, Aug. 28 from 5 - 8 p.m.

Hardy fruits and vegetables will be accepted from 6-8 p.m. on Wednesday, August 29th.

Fruits, vegetables and flower entries will be accepted on Thursday, September 1st from 7:00 - 9:00 a.m.

Parents and Leaders We Need Your Help . . .

We will be taking in entries on Saturday, August 25 from 8 am to 5 pm and on Tuesday, August 28 from 5 to 8 pm, Wednesday from 6 to 8 pm and on Thursday from 6:30 a.m. to noon.

We need at least 3 adults on Saturday, and one adult on Tuesday & Wednesday and 2 to 3 adults on Thursday. If you can help during these times, please call the 4-H Office at 760-873-7854

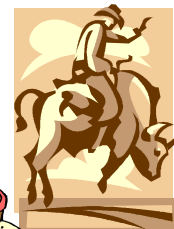
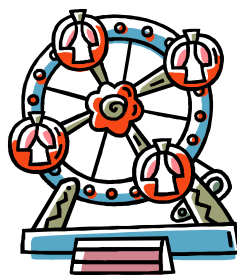
We also need someone to “train” to be the Department Head for next year, as Cathy will no longer be doing it. You can work with Cathy this year and take over next. If you are interested in finding out more about this, please call Cathy at 760-873-7854.



Find us on
Facebook

<http://www.facebook.com#!/pages/Inyo-Mono-Counties-4-H/118487004877725>

The University of California, in accordance with applicable State and Federal laws and University policy, does not discriminate on the basis of race, color, national origin, religion, sex, disability, age, medical condition (cancer-related), ancestry, marital status, citizenship, sexual orientation, or status as a Vietnam-era veteran or special disabled veteran. The University also prohibits sexual harassment. Inquiries regarding the University's nondiscrimination policies may be directed to the Affirmative Action Director, University of California, Agriculture and Natural Resources, 1111 Franklin Street, 6th Floor, Oakland, CA 94607-5200 (510) 987-0096.



Don't forget to check out the 4-H Exhibits in the Douglas Robinson Building and all the other great events offered at the Tri-County

Dear Inyo & Mono 4-H Community,

As summer comes to a close, we are getting busy for our upcoming 4-H year! I look forward to seeing your entries at the 2012 Tri-County Fair. Come show the community how talented our 4-H program is! And I am really looking forward to seeing you all at the 4-H Sign-Up Fair in September. The date will be announced by the end of August. Look for another issue of the Roadrunner to come

Sincerely,

**Serena Dennis,
4-H Program Representative**



Return Service Requested

NON PROFIT ORG
US POSTAGE PAID
BISHOP CA
PERMIT NO. 29

COOPERATIVE EXTENSION
U.S. DEPARTMENT OF AGRICULTURE
UNIVERSITY OF CALIFORNIA
207 W. SOUTH STREET
BISHOP, CA 93514